



J.LOCK DESIGNS

PHASE ONE

4514 GRANGER ST.
POINT LOMA, CA

COASTAL CHARM

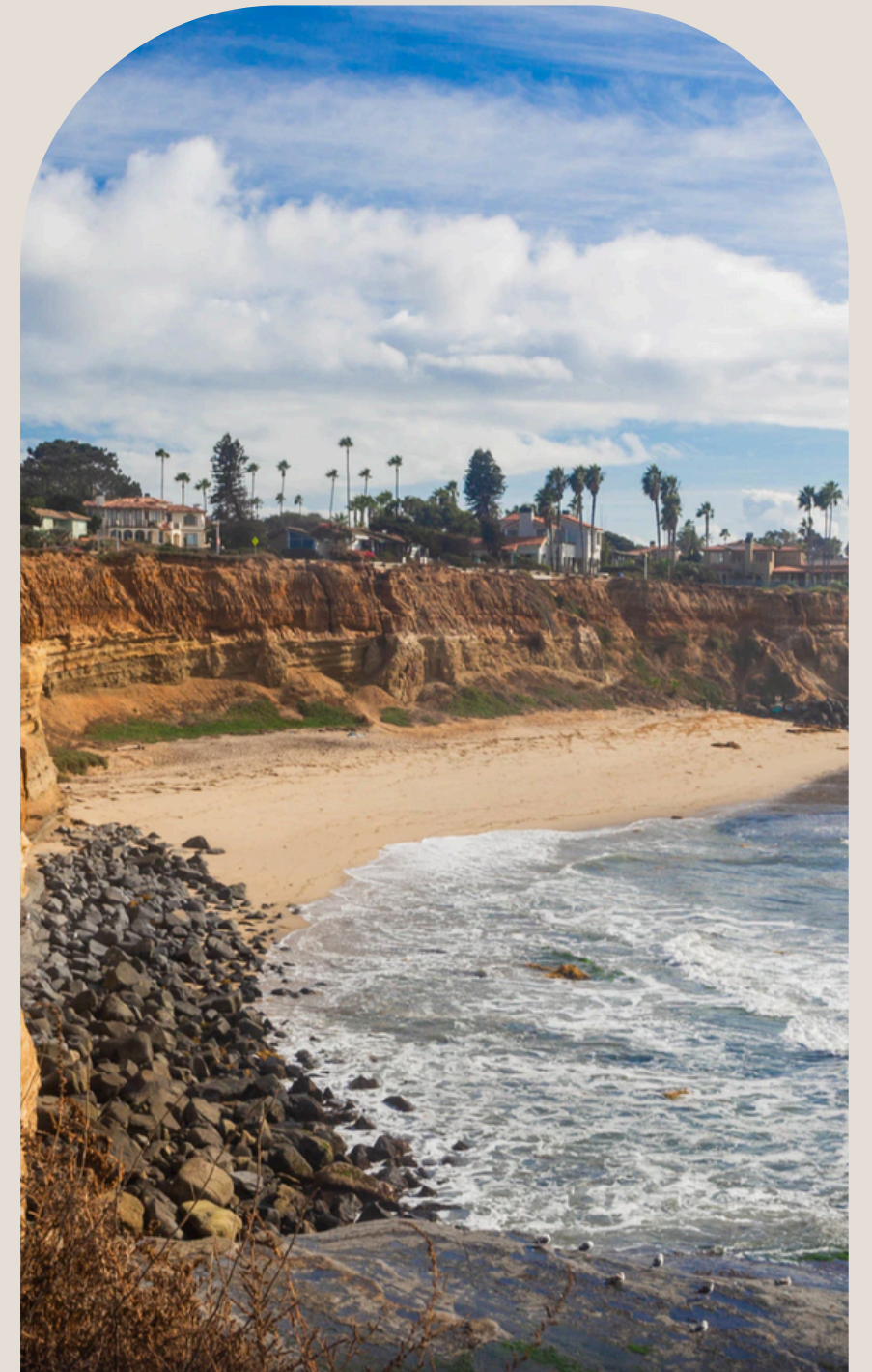




Table Of Content

Welcome	01
Team	02
Site Research	03
Site Analysis	04
Scope	05
Inspiration	06

Concept	07
Mood Boards	08
Schedmatic Drawings	10
Testimonial	11
Contact	12

4514 Granger St.



About J.lock Designs

A lifetime of growing inspiration from the natural world and the interactions we have with it every day, I developed a passion to not only design, but to play with all the different ways design fits into our modern lives. Finding gratitude and balance in being able to give back to the world surrounding me fits my essence to utilize artistic drives in a way to better our communities and the lives of our surroundings. This ideal is not just for the present but for generations to come. With a culture that is becoming more intertwined globally and technologically, it is vital to understand what is at our core and the connections we all share linked through the the natural world. "People, Planet, & Prosperity" is a phrase I like to consider throughout all phases of a design to ensure these considerations are not forgotten.



01

4514
Granger St.

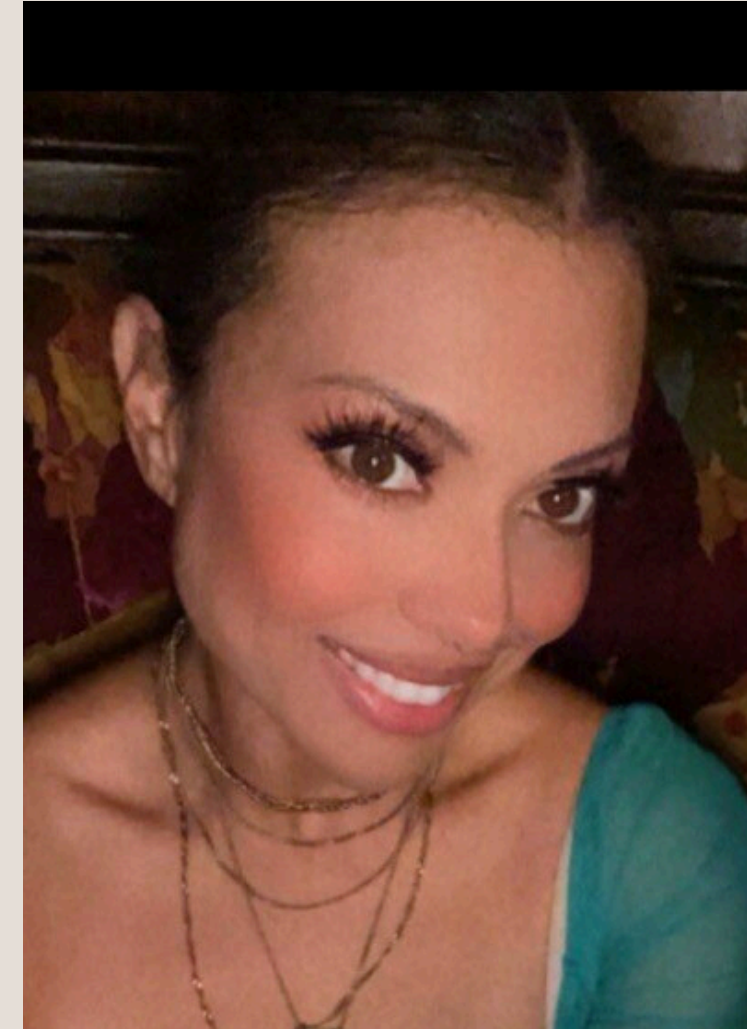




Jenna Morlock
Senior Interior Designer



Karyn Baca
Project Manager



The Team

4514 Granger St.

02

Site Research

Point Loma is rich with culture and historical moments. It was the first area settled by the Europeans in San Diego. Located in an ideal portion of the County, it is walkable to a thriving beach community and the world renowned Sunset Cliffs. Known for its ports and the worlds largest sport fishing fleet, coastal lifestyle is prominent in this community. Locals enjoy the scenic nature it has to offer daily and a more unique annual gray whale migration, in early winter. It is home to many members of the Navy, new and growing families, and fishing or outdoors enthusiasts.

HISTORY

Point Loma, San Diego



J. LOCK DESIGNS



03

4514 Granger St.

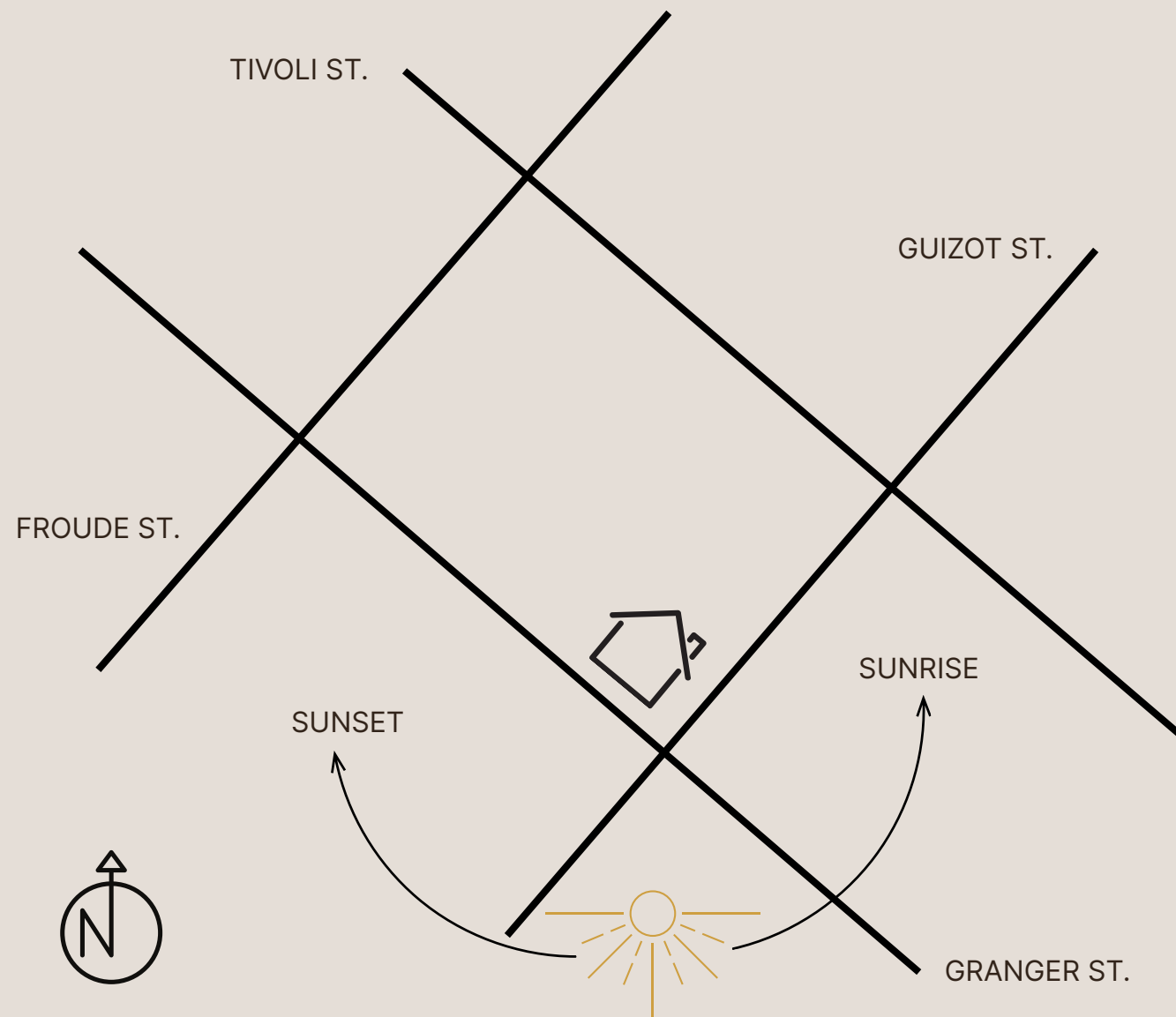
Site Research

PROPERTY ANALYSIS

Point Loma, San Diego



J. LOCK DESIGNS



Walking distance to;

- schools
- parks
- churches
- downtown
- restaurants
- sunset cliffs
- bus stops

10 minute drive to;

- freeway entrance
- dog beach
- ocean beach
- mission beach
- pacific beach



04

4514 Granger St.